

Clarke®



150MM ELECTRIC EARTH BORER

MODEL NO: CEA150

PART NO: 3400997

OPERATING & MAINTENANCE INSTRUCTIONS



DL1022 R3

INTRODUCTION

Thank you for purchasing this CLARKE Electric Earth Borer designed for boring holes in soil only, for fence posts, re-forestation, and similar operations.

Before attempting to use this product, please read this manual thoroughly and follow the instructions carefully. In doing so you will ensure the safety of yourself and that of others around you, and you can look forward to your purchase giving you long and satisfactory service.

GUARANTEE

This product is guaranteed against faulty manufacture for a period of 12 months from the date of purchase. Please keep your receipt which will be required as proof of purchase.

This guarantee is invalid if the product is found to have been abused or tampered with in any way, or not used for the purpose for which it was intended.

Faulty goods should be returned to their place of purchase, no product can be returned to us without prior permission.

This guarantee does not effect your statutory rights.

ENVIRONMENTAL RECYCLING POLICY



Through purchase of this product, the customer is taking on the obligation to deal with the WEEE in accordance with the WEEE regulations in relation to the treatment, recycling & recovery and environmentally sound disposal of the WEEE.

In effect, this means that this product must not be disposed of with general household waste. It must be disposed of according to the laws governing Waste Electrical and Electronic Equipment (WEEE) at a recognised disposal facility.

If disposing of this product or any damaged components, do not dispose of with general waste. This product contains valuable raw materials. Metal products should be taken to your local civic amenity site for recycling of metal products.

SPECIFICATION

Model Number	CEA150
Voltage	230 V @ 50 Hz
Duty Cycle	Continuous
Output Speed	200 rpm
Overload Clutch Torque	120 Nm
Sound Pressure Level (L_{pA} dB)	90 dB(A)
Guaranteed Sound Power (L_{wA} dB)	102 dB(A)
Vibration	5.5m/s ² (K=1.5 m/s ²)
Dimensions with auger (L x W x H)	360 x 600 x 1105 mm
Product Weight (complete)	12.35 Kg
Auger Diameter	150 mm
Auger Overall Length	800 mm
Auger Effective Length	560 mm

GENERAL SAFETY RULES



WARNING: WHEN USING ELECTRIC TOOLS, MACHINES, OR EQUIPMENT, BASIC SAFETY PRECAUTIONS SHOULD ALWAYS BE FOLLOWED TO REDUCE THE RISK OF FIRE, ELECTRIC SHOCK OR PERSONAL INJURY.

1. Keep the work area clean. Cluttered areas invite injuries. Keep work area well lit.
2. Never use power tools in damp, wet, or poorly lit locations. Don't expose to rain. Do not use electrically powered tools in the presence of flammable gases or liquids.
3. Keep children away. Children must never be allowed in the work area. Do not let them handle machines, tools, or extension cables.
4. Store idle equipment. When not in use, tools must be locked up in a dry location to inhibit rust. Always lock up tools and keep out of reach of children.
5. Do not force the tool. It will do the job better and more safely at the rate for which it was intended.

6. Dress properly. Do not wear loose clothing or jewellery which could be caught in moving parts.
7. Use eye and hand protection and footwear for this type of appliance. Always wear approved impact safety goggles.
8. Do not abuse the power cable. Do not yank it to disconnect it from the socket. Do not carry power tools by the cable.
9. Disconnect the power. Unplug when not in use, before servicing, and when changing accessories.
10. Avoid unintentional starting. Be sure the switch is in the OFF position when not in use and before plugging in.
11. Stay alert. Watch what you are doing, use common sense. Do not operate any tool when you are tired.
12. Check for damaged parts. Before using any tool, any part that appears damaged should be carefully checked to determine that it will operate properly and perform its intended function. Do not use the tool if the switch does not turn on and off properly.
13. Guard against electric shock. Prevent body contact with grounded surfaces.
14. Replacement parts and accessories. When servicing, your Clarke dealer will only use only identical replacement parts. Use of any other parts will void the warranty. Only use accessories intended for use with this tool.
15. Do not operate tool if under the influence of alcohol or drugs. If there is any doubt, do not operate the tool.
16. Never use this machine for boring in landfill or soil known to contain large rocks or unknown debris.
17. Always be alert and adopt a firm stance when handling the machine. Be prepared for the machine to jar suddenly, should the auger come into contact with a submerged or heavy object, heavy clay, or tree roots etc.
18. Always check to ensure the auger securing pin is secure before each use.
19. Always use both hands to control the machine.
20. Always check, before use, to ensure there are no submerged drains, pipes, culverts etc, that may interfere with the boring operation.
21. Always keep bystanders well clear of the boring operation.

ELECTRICAL CONNECTIONS



WARNING! Read these electrical safety instructions thoroughly before connecting the product to the mains supply.

Before switching the product on, make sure that the voltage of your electricity supply is the same as that indicated on the rating plate. This product is designed to operate on 230VAC 50Hz. Connecting it to any other power source may cause damage.

This product may be fitted with a non-rewireable plug. If it is necessary to change the fuse in the plug, the fuse cover must be refitted. If the fuse cover becomes lost or damaged, the plug must not be used until a suitable replacement is obtained.

If the plug has to be changed because it is not suitable for your socket, or due to damage, it should be cut off and a replacement fitted, following the wiring instructions shown below. The old plug must be disposed of safely, as insertion into a mains socket could cause an electrical hazard.

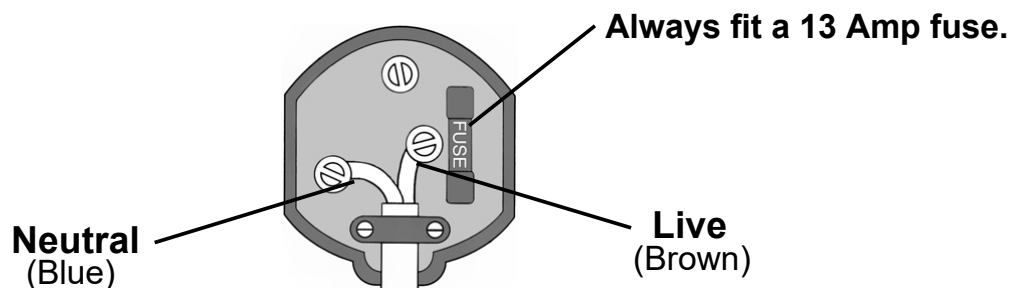


**WARNING! The wires in the power cable of this product are coloured in accordance with the following code:
Blue = Neutral Brown = Live**

If the colours of the wires in the power cable of this product do not correspond with the markings on the terminals of your plug, proceed as follows.

- The wire which is coloured **Blue** must be connected to the terminal which is marked **N** or coloured **Black**.
- The wire which is coloured **Brown** must be connected to the terminal which is marked **L** or coloured **Red**.

Plug must be BS1363/A approved.

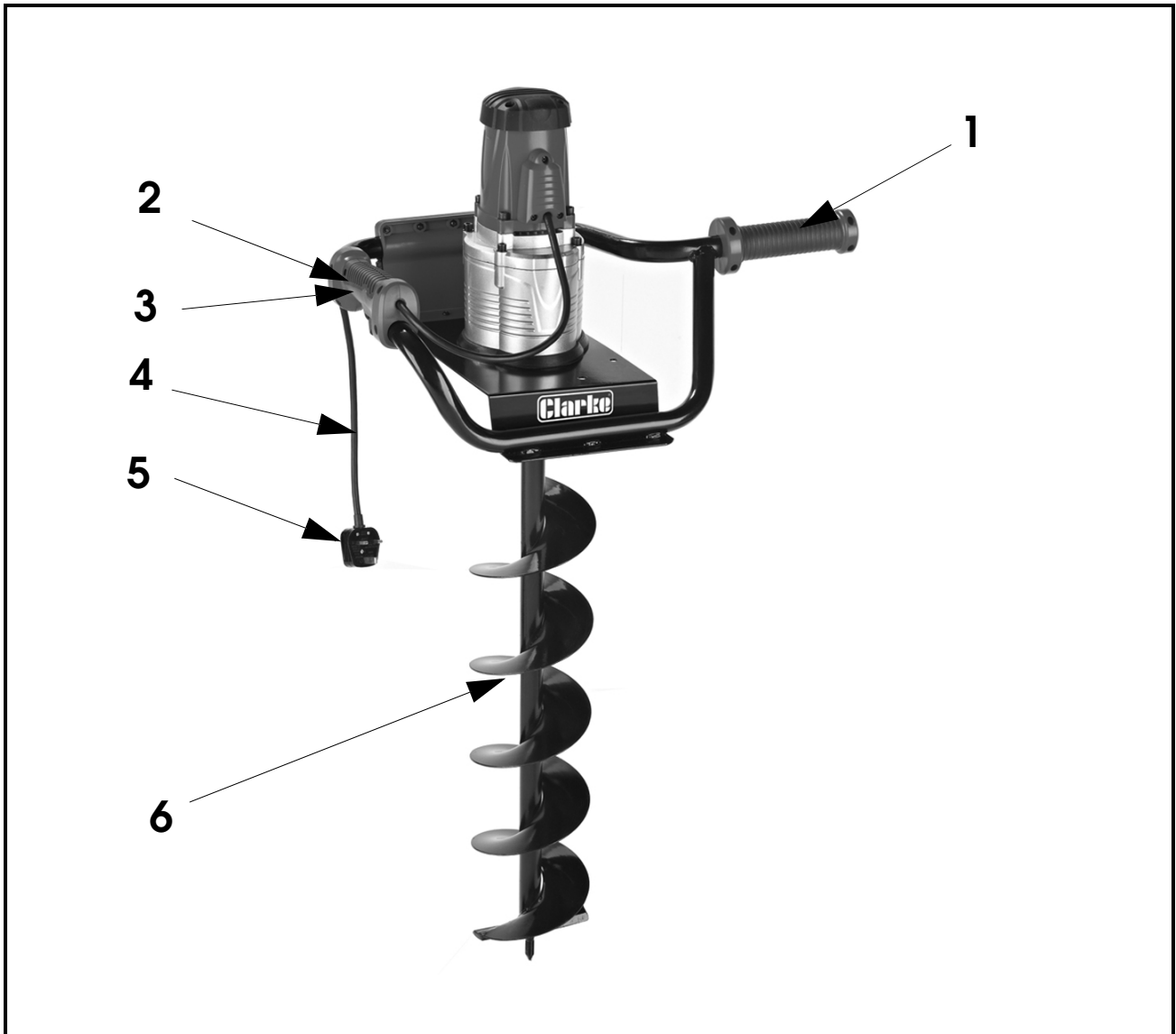


Ensure that the outer sheath of the cable is firmly held by the clamp

We strongly recommend that this machine is connected to the mains supply via a Residual Current Device (RCD) If in any doubt, consult a qualified electrician. DO NOT attempt any repairs yourself. This is a class II product which does not require an earth connection.



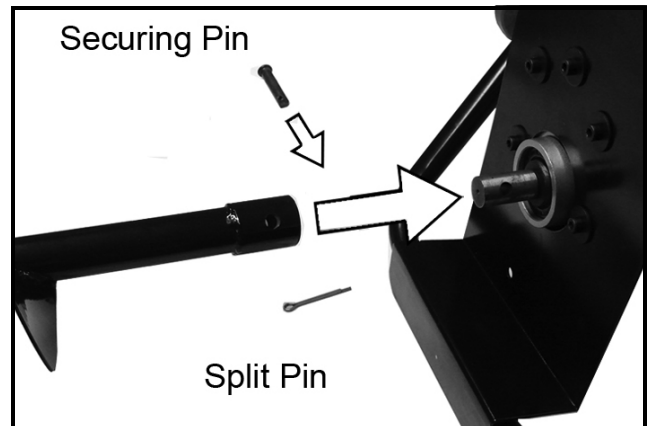
PRODUCT OVERVIEW



No	DESCRIPTION	No	DESCRIPTION
1	Left Handle	4	Power Cable
2	Right Handle	5	Power Plug
3	Trigger Switch with Lock	6	Auger Bit

INSTALLING THE AUGER BIT

1. Slide the auger bit onto the drive shaft, insert the securing pin and secure with the split pin provided.
2. Plug the auger into a suitable mains power outlet via a suitable extension cable marked for outdoor use.
 - The extension cable must be suitable to carry the current needed. An undersized cable will cause the voltage to drop and cause it to overheat.



OPERATION

BEFORE STARTING

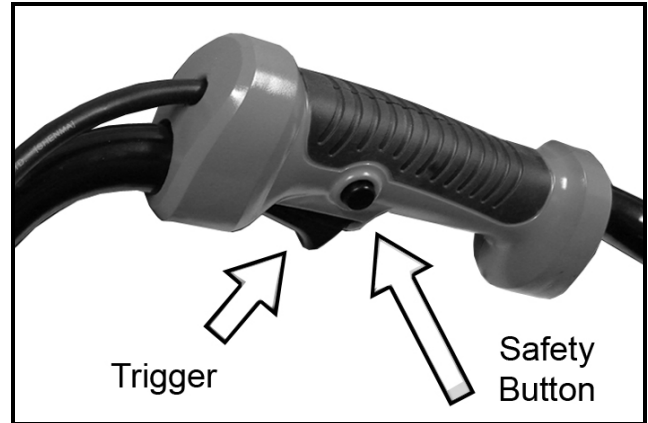
1. Clear vegetation from around the location of the hole.
 - This will prevent vegetation from binding around the auger bit.
2. Do not use the auger on rocky ground.
3. Examine the extension cable frequently for damage.

POSITIONING YOURSELF DURING USE

1. Use a wide, stable stance.
2. Keep your feet away from the auger.
3. Hold the handles tightly.
4. Make sure that you keep the extension cable away from the auger bit.

USING THE AUGER

1. Put the point of the auger at the location of the hole.
2. Depress the safety button and slowly squeeze the trigger to start the machine.
 - The auger bit will start rotating.
3. Apply a light downward pressure to drill the hole.
4. Periodically, raise the auger to help clear drilling debris from the hole.



NOTE: Overloading the auger during use can cause it to stop turning. If this occurs, lift the auger to decrease the load on the motor and allow material to be lifted out of the hole before you continue.

MAINTENANCE

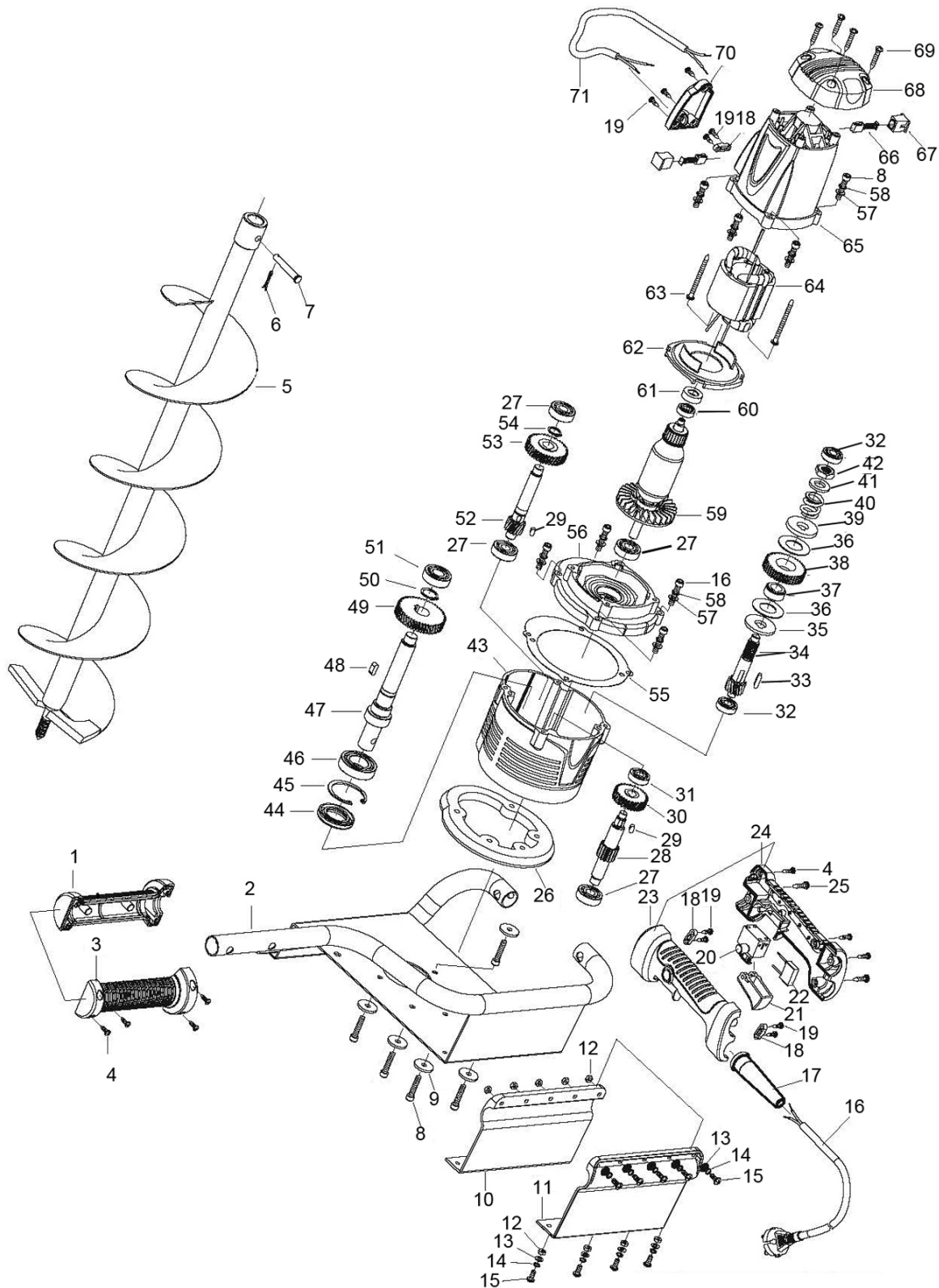


WARNING: ALWAYS DISCONNECT FROM THE POWER SUPPLY BEFORE CLEANING OR PERFORMING ANY MAINTENANCE TASKS.

CLEANING

1. Keep the surface of your machine free of dirt. Use a cloth dampened with soapy water. Do not use petroleum based solvents or abrasives. Never immerse the machine in any liquid.
2. The Auger bit should be removed and cleaned separately.
3. If the motor/drive mechanism does not operate, it needs to be serviced or replaced by a qualified technician.
4. Store the machine in a secure, dry place, out of reach of children.

PARTS LIST AND DIAGRAM



ID	DESCRIPTION	PART NO	ID	DESCRIPTION	PART NO
1	Left Handle Half	WGCEA15001	37	Gear Sleeve	WGCEA15037
2	Supporting Frame	WGCEA15002	38	Gear	WGCEA15038
3	Right Handle Half	WGCEA15003	39	Upper Flange Washer	WGCEA15039
4	Screw	WGCEA15004	40	Coil Spring	WGCEA15040
5	Auger Bit	WGCEA15005	41	Spring Flange Washer	WGCEA15041
6	Bolt	WGCEA15006	42	Nut	WGCEA15042
7	Pin	WGCEA15007	43	Gear Casing	WGCEA15043
8	Screw	WGCEA15008	44	Oil Seal	WGCEA15044
9	Washer	WGCEA15009	45	Circlip	WGCEA15045
10	Inner Cover Board	WGCEA15010	46	Bearing	WGCEA15046
11	Outer Cover Board	WGCEA15011	47	Spindle	WGCEA15047
12	Nut	WGCEA15012	48	Woodruff Key	WGCEA15048
13	Washer	WGCEA15013	49	Drive Gear	WGCEA15049
14	Spring Washer	WGCEA15014	50	Circlip	WGCEA15050
15	Screw	WGCEA15015	51	Bearing	WGCEA15051
16	Power Cable	WGCEA15016	52	Gear Spindle	WGCEA15052
17	Cable Gland	WGCEA15017	53	Gear	WGCEA15053
18	Cable Clamp	WGCEA15018	54	Circlip	WGCEA15054
19	Screw	WGCEA15019	55	Oil-Proof Paper Seal	WGCEA15055
20	Switch	WGCEA15020	56	Centre Cover	WGCEA15056
21	Switch Button	WGCEA15021	57	Washer	WGCEA15057
22	Capacitor	WGCEA15022	58	Spring Washer	WGCEA15058
23	Left Handle Half	WGCEA15023	59	Rotor	WGCEA15059
24	Right Handle Half	WGCEA15024	60	Bearing	WGCEA15060
25	Screw	WGCEA15025	61	Bearing Cover	WGCEA15061
26	Rubber Gasket	WGCEA15026	62	Connecting Flange	WGCEA15062
27	Bearing	WGCEA15027	63	Screw	WGCEA15063
28	Gear Spindle	WGCEA15028	64	Stator	WGCEA15064
29	Woodruff Key	WGCEA15029	65	Motor Housing	WGCEA15065
30	Drive Gear	WGCEA15030	66	Carbon Brush	WGCEA15066
31	Bearing	WGCEA15031	67	Carbon Brush Holder	WGCEA15067
32	Bearing	WGCEA15032	68	Rear Cover	WGCEA15068
33	Woodruff Key	WGCEA15033	69	Screw	WGCEA15069
34	Gear Spindle	WGCEA15034	70	Safety Cover	WGCEA15070
35	Lower Flange Washer	WGCEA15035	71	Connecting Wire	WGCEA15071
36	Friction Disc	WGCEA15036			

DECLARATION OF CONFORMITY - UKCA & CE



Hemncill Street, Epping, Essex CM16 4LG

DECLARATION OF CONFORMITY

This is an important document and should be retained.

We hereby declare that this product(s) complies with the following statutory requirement(s):

- Electromagnetic Compatibility Regulations 2016
- Supply of Machinery (Safety) Regulations 2008
- Noise Emission in the Environment by Equipment for Use Outdoors Regulations 2001
- The Restriction of the Use of Certain Hazardous Substances in Electrical and Electronic Equipment Regulations 2012

The following standards have been applied to the product(s):

- EN 55014-1:2017, EN 55014-2:2015, EN 61000-3-2:2014, EN 61000-3-3:2013,
- EN 60335-1:2012 + A11:2014, EN 62233:2008, EN ISO 12100:2010, ISO 11094:1991,
- EN ISO 3744:1995 & Annex III, IEC 62321-1:2013, IEC 62321-2:2013, IEC 62321-3-1:2013,
- IEC 62321-4:2013 + AMD1:2017 CSV, IEC 62321-5:2013, IEC 62321-6:2015, IEC 62321-7-1:2015,
- IEC 62321-7-2:2017, IEC 62321-8:2017, ISO 17075:2007.

The technical documentation required to demonstrate that the product(s) meet(s) the requirement(s) of the aforementioned legislation has been compiled and is available for inspection by the relevant enforcement authorities.

The UKCA mark was first applied in: 2022

Product Description: Electric Earth Auger with 150mm Bit
Model number(s): CEA150
Serial / batch Number: N/A
Date of Issue: 19/10/2022

Signed:

J.A. Clarke
Director



Fitzwilliam Hall, Fitzwilliam Place, Dublin 2

DECLARATION OF CONFORMITY

This is an important document and should be retained.

We hereby declare that this product(s) complies with the following directive(s):

- 2014/30/EU Electromagnetic Compatibility Directive
- 2006/42/EC Machinery Directive
- 2000/14/EC Outdoor Noise Directive
- 2011/65/EU Restriction of the Use of Certain Hazardous Substances in Electrical & Electronic Equipment (RoHS) Directive

The following standards have been applied to the product(s):

- EN 55014-1:2017, EN 55014-2:2015, EN 61000-3-2:2014, EN 61000-3-3:2013,
- EN 60335-1:2012 + A11:2014, EN 62233:2008, EN ISO 12100:2010, ISO 11094:1991,
- EN ISO 3744:1995 & Annex III, IEC 62321-1:2013, IEC 62321-2:2013, IEC 62321-3-1:2013,
- IEC 62321-4:2013 + AMD1:2017 CSV, IEC 62321-5:2013, IEC 62321-6:2015, IEC 62321-7-1:2015,
- IEC 62321-7-2:2017, IEC 62321-8:2017, ISO 17075:2007.

The technical documentation required to demonstrate that the product(s) meet(s) the requirement(s) of the aforementioned directive(s) has been compiled and is available for inspection by the relevant enforcement authorities.

The CE mark was first applied in:

Product Description: Electric Earth Auger with 150mm Bit
Model number(s): CEA150
Serial / batch Number: N/A
Date of Issue: 19/10/2022

Signed:

J.A. Clarke
Director

A SELECTION FROM THE VAST RANGE OF

Clarke®

QUALITY PRODUCTS



AIR COMPRESSORS
From DIY to industrial, Plus air tools, spray guns and accessories.

GENERATORS
Prime duty or emergency standby for business, home and leisure.

POWER WASHERS
Hot and cold, electric and engine driven - we have what you need

WELDERS
Mig, Arc, Tig and Spot.
From DIY to auto/industrial.

METALWORKING
Drills, grinders and saws for DIY and professional use.

WOODWORKING
Saws, sanders, lathes, mortisers and dust extraction.

HYDRAULICS
Cranes, body repair kits, transmission jacks for all types of workshop use.

WATER PUMPS
Submersible, electric and engine driven for DIY, agriculture and industry.

POWERTOOLS
Angle grinders, cordless drill sets, saws and sanders.

STARTERS/CHARGERS
All sizes for car and commercial use.



PARTS & SERVICE: 0208 988 7400

Parts Enquiries
Parts@clarkeinternational.com

Servicing & Technical Enquiries
Service@clarkeinternational.com

SALES: UK 01992 565333 or Export 00 44 (0)1992 565335

Clarke® INTERNATIONAL Hemnall Street, Epping, Essex CM16 4LG
www.clarkeinternational.com